

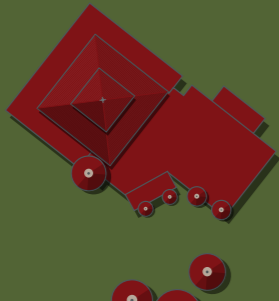
THE ANIMALS IN THE SAFARI PARK

- 1 Persian leopard
- 2 West African chimpanzee
- 3 Grant's Zebra
- 4 Waterbuck
- 5 Blue wildebeest
- 6 Zebu
- 7 Gemsbok
- 8 Red river hog
- 9 Banded mongoose
- 10 Defassa waterbuck
- 11 Nile lechwe
- 12 African elephant
- 13 Hamadryas baboon
- 14 African buffalo
- 15 Nubian giraffe
- 16 Impala
- 17 Grévy's zebra
- 18 Sable antelope
- 19 Colobine monkey
- 20 Western lowland gorilla
- 21 African lion
- 22 Spotted hyena
- 23 Dromedary
- 24 Ostrich
- 25 Okapi
- 26 Kirk's dik-dik
- 27 Nyala
- 28 Addax
- 29 Red panda
- 30 De Brazza's monkey
- 31 Asian small-clawed otter
- 32 Sloth bear
- 33 L'Hoest's monkey
- 34 African forest buffalo
- 35 Vietnamese sika deer
- 36 African penguin
- 37 Ring-tailed lemur
- 38 Red ruffed lemur
- 39 Great white pelican
- 40 Camel
- 41 Przewalski's horse
- 42 Chital
- 43 Banteng
- 44 Père David's deer
- 45 Blackbuck
- 46 Sitatunga
- 47 Marabou stork
- 48 Hippopotamus
- 49 Nile crocodile
- 50 Siberian tiger
- 51 Persian gazelle
- 52 Yak
- 53 Southern white rhinoceros
- 54 Common eland
- 55 Ankole-Watusi
- 56 Greater flamingo
- 57 Blesbok
- 58 Springbok
- 59 Highland cattle
- 60 Red deer
- 61 Heck cattle
- 62 Southern cheetah
- 63 African wild dog
- 64 Meerkat (autumn 2024)
- 65 Bat-eared fox (autumn 2024)
- 66 Black rhinoceros
- 67 Black crested mangabey
- 68 Lar gibbon

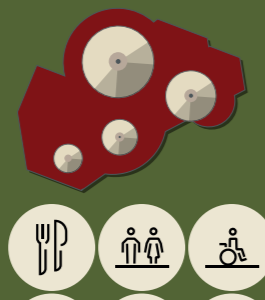
KONGOPLEIN



AFRIKADORP



SAFARIPLEIN



BEEKSE BERGEN SAFARIPARK

LEGEND

- Walking safari
- Boat safari
- Car safari
- Walking route to Safari Resort
- Entrance + exit Safaripark
- Entrance Safari Park/Safari Resort
- Car park
- Ostrich Express
- Shop
- Birds of prey safari
- Hospitality
- Smoking zone
- Canoe embarkation point
- Playground
- Toilets
- Disabled toilet
- Changing Place
- Rental/delivery point for carts + wheelchairs
- Guest services
- Parking token machine
- First Aid T. 013-5491222
- Aviary
- Wildlife Foundation
- Indoor animal enclosure

WALKING SAFARI

While walking, you will come across lots of interesting animals. To make things easy, you can rent a wheelchair (free of charge) or cart (rental €10) from Guest Services.

- Safariplein to Kongoplein and back approx. 2 hours
- Safariplein to Afrikadorp and back approx. 1 hours
- Kongoplein to Afrikadorp and back approx. 1 hours

BOAT SAFARI

Board the safari boat and spot the animals along the banks with the ranger. You can get off near Safari Square or Congo Square. The journey takes about 30 minutes.

BIRDS OF PREY SAFARI

The birds of prey safari will take you into the world of birds of prey in spectacular fashion. Come on time, as gates close once it starts!

CAR SAFARI

Go on safari in your own car! Follow the route signposted 'car safari' and go on your own adventure. The car safari is open until half an hour before closing time.
Please note: feeding or petting the animals or getting out of the car is not allowed!